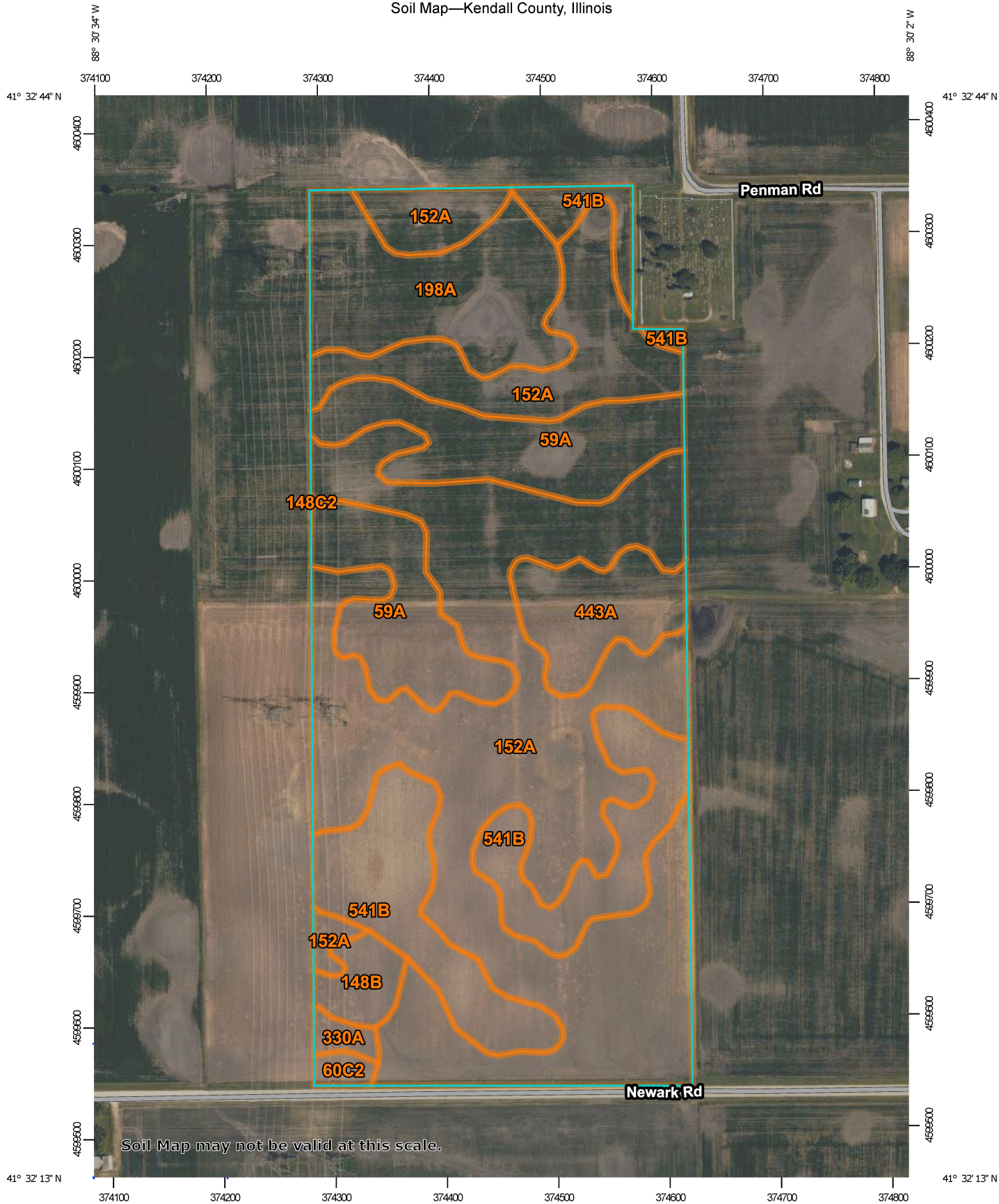


Soil Map—Kendall County, Illinois



Map Scale: 1:4,720 if printed on A portrait (8.5" x 11") sheet.

0 50 100 200 300 Meters

0 200 400 800 1200 Feet

Map projection: Web Mercator Corner coordinates: WGS84 Edge tics: UTM Zone 16N WGS84



## Map Unit Legend

Map Unit Symbol	Map Unit Name	Acres in AOI	Percent of AOI
59A	Lisbon silt loam, 0 to 2 percent slopes	9.4	14.3%
60C2	La Rose silt loam, 5 to 10 percent slopes, eroded	0.4	0.6%
148B	Proctor silt loam, 2 to 5 percent slopes	1.2	1.9%
148C2	Proctor silt loam, 5 to 10 percent slopes, eroded	0.0	0.0%
152A	Drummer silty clay loam, 0 to 2 percent slopes	34.5	52.4%
198A	Elburn silt loam, 0 to 2 percent slopes	6.5	10.0%
330A	Peotone silty clay loam, 0 to 2 percent slopes	0.4	0.7%
443A	Barrington silt loam, 0 to 2 percent slopes	3.3	5.0%
541B	Graymont silt loam, 2 to 5 percent slopes	10.0	15.2%
<b>Totals for Area of Interest</b>		<b>65.7</b>	<b>100.0%</b>