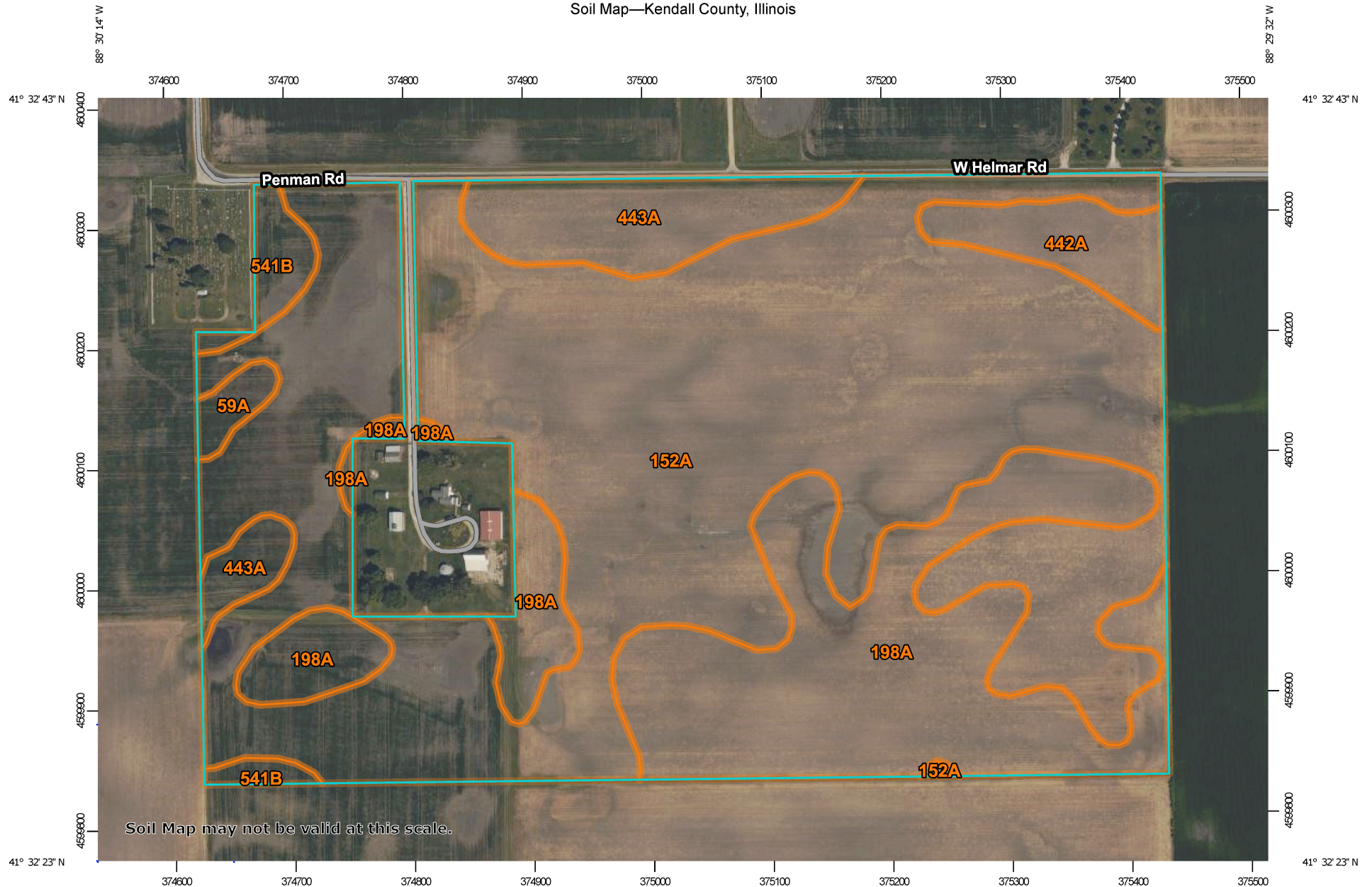
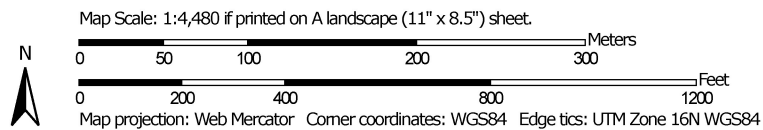


Soil Map—Kendall County, Illinois



Soil Map may not be valid at this scale.



Natural Resources
Conservation Service

Web Soil Survey
National Cooperative Soil Survey

10/25/2022
Page 1 of 3

Map Unit Legend

Map Unit Symbol	Map Unit Name	Acres in AOI	Percent of AOI
59A	Lisbon silt loam, 0 to 2 percent slopes	0.7	0.8%
152A	Drummer silty clay loam, 0 to 2 percent slopes	60.4	64.8%
198A	Elburn silt loam, 0 to 2 percent slopes	21.8	23.4%
442A	Mundelein silt loam, 0 to 2 percent slopes	2.8	3.0%
443A	Barrington silt loam, 0 to 2 percent slopes	5.8	6.3%
541B	Graymont silt loam, 2 to 5 percent slopes	1.7	1.8%
Totals for Area of Interest		93.3	100.0%